
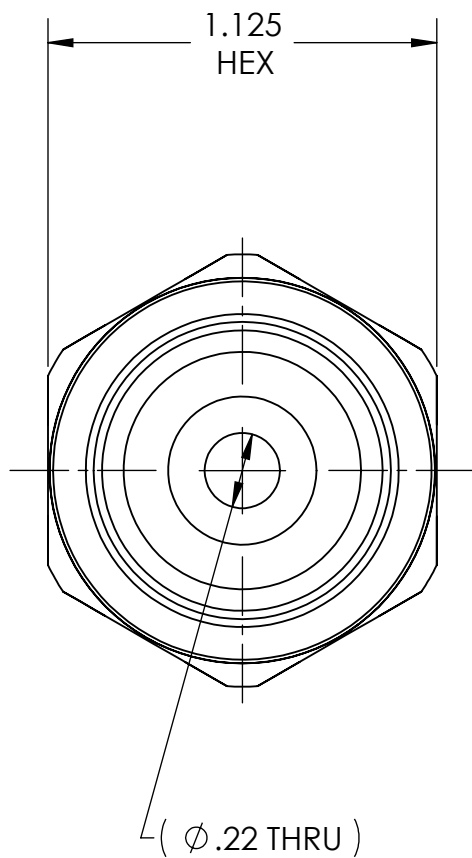


DWG. No./Part No.: A-581					CODE: S	DESCRIPTION: OUTLET ADAPTOR, CGA-510 to 1/4 NPT	MATERIAL: 1.1250 HEX BRASS	FINISH: BRITE-DIP	 Superior Products, Inc.	
REV	ECN	DATE	CHKD	APPVD	<u>TOLERANCES UNLESS SPECIFIED:</u> 125 FINISH ALL OVER REMOVE ALL BURRS BREAK ALL CORNERS .015/.005 DECIMAL .XX +/- .015 .XXX +/- .005 ANGULAR +/- 1 CONCENTRICITY .007 TIR		NOTICE: THE DATA IN THIS DOCUMENT INCORPORATES PROPRIETARY INFORMATION AND RIGHTS OF SUPERIOR PRODUCTS, INC. CONFIDENCE AND AGREES THAT IT SHALL NOT BE DUPLICATED IN WHOLE OR IN PART, NOR DISCLOSED TO OTHERS WITHOUT THE WRITTEN CONSENT OF SUPERIOR PRODUCTS, INC.			INTERPRET GEOMETRIC TOLERANCING PER: ANSI Y14.5
A	100705A	06/05/06	GDG	MRE						DO NOT SCALE



.885-14 LH NGO
CGA - V1
CONN - 510

