
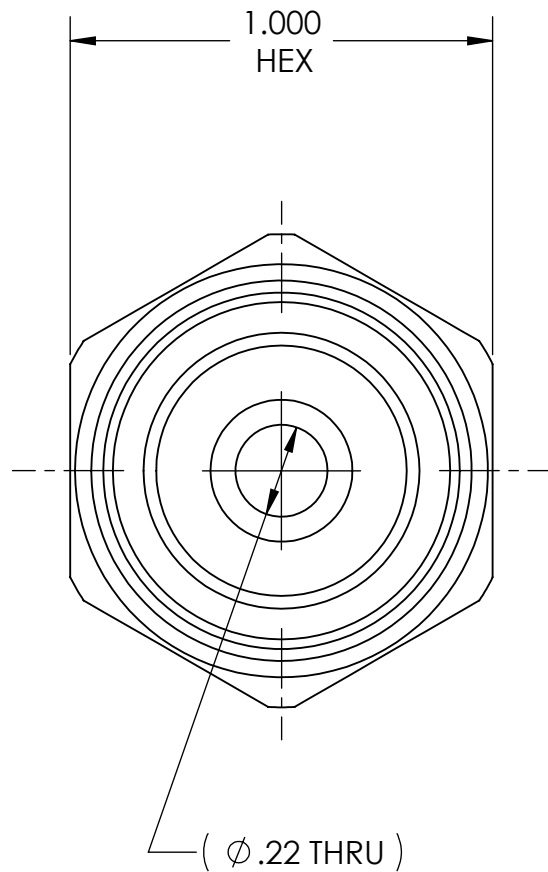


|                                 |         |          |      |       |   |   |  |                          |   |  |
|---------------------------------|---------|----------|------|-------|---|---|--|--------------------------|---|--|
| DWG. No./Part No.:<br><br>A-592 |         |          |      |       | CODE:<br><br>S  | DESCRIPTION:<br><br>OUTLET ADAPTOR, CGA-540<br>to 3/8 NPT | MATERIAL:<br><br>1.0000 HEX BRASS  | FINISH:<br><br>BRITE-DIP |  <b>Superior<br/>Products,<br/>Inc.</b> |  |
| REV                             | ECN     | DATE     | CHKD | APPVD | <u>TOLERANCES UNLESS SPECIFIED:</u><br>125 FINISH ALL OVER<br>REMOVE ALL BURRS<br>BREAK ALL CORNERS .015/.005<br>DECIMAL .XX +/- .015<br>.XXX +/- .005<br>ANGULAR +/- 1<br>CONCENTRICITY .007 TIR |   | <u>NOTICE:</u><br>THE DATA IN THIS DOCUMENT INCORPORATES<br>PROPRIETARY INFORMATION AND RIGHTS OF<br>SUPERIOR PRODUCTS, INC. CONFIDENCE AND<br>AGREES THAT IT SHALL NOT BE DUPLICATED IN<br>WHOLE OR IN PART, NOR DISCLOSED TO OTHERS<br>WITHOUT THE WRITTEN CONSENT OF SUPERIOR<br>PRODUCTS, INC. |                          |   | INTERPRET GEOMETRIC<br>TOLERANCING PER:   ANSI Y14.5 |
| A                               | REDRAWN | 07/19/06 | GDG  | MRE   |   |   |  |                          |   | DO NOT SCALE   |
|                                 |         |          |      |       |   |   |  |                          |   |  |
|                                 |         |          |      |       |   |   |  |                          |   |  |



.903-14 RH NGO  
CGA - V1  
CONN - 540

