
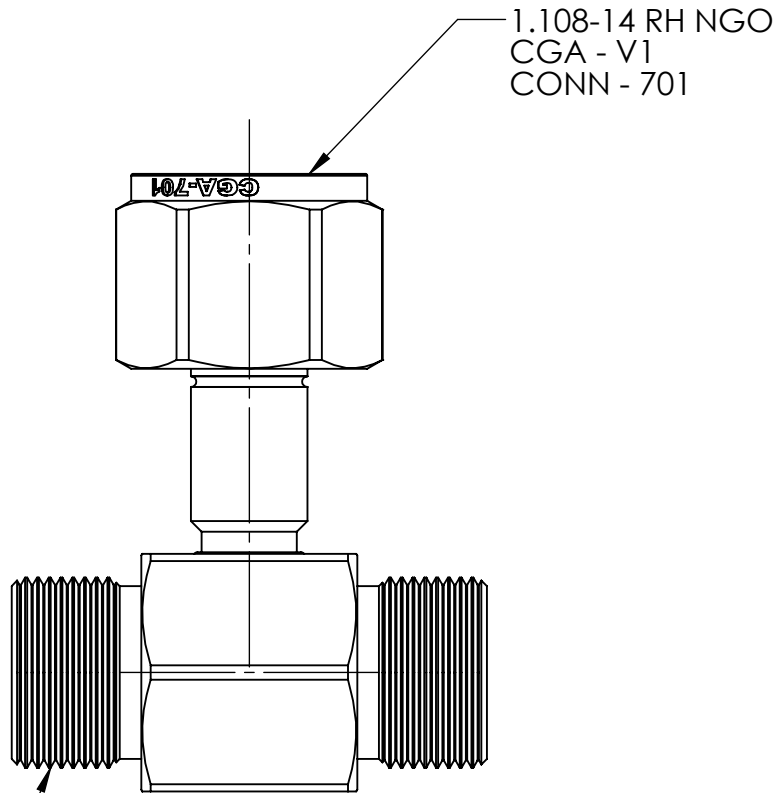
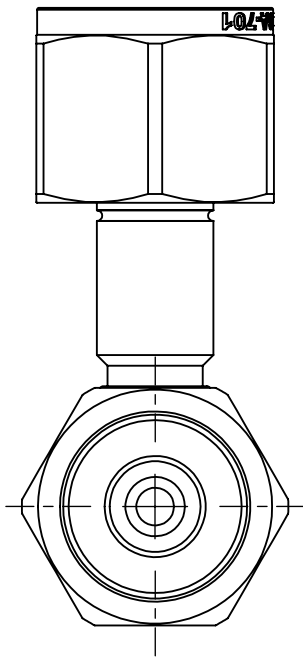


|                                     |         |          |      |       |   |  |  |  |   |
|-------------------------------------|---------|----------|------|-------|---|--|--|--|---|
| DWG. No./Part No.:<br><b>C-2701</b> |         |          |      |       | CODE:<br><b>S</b>   | DESCRIPTION:<br><b>TEE-COUPLER, CGA-701</b>  | MATERIAL:  | FINISH:<br><b>TO BE FREE FROM<br/>OIL AND DIRT</b> |  <b>Superior<br/>Products,<br/>Inc.</b> |
| REV                                 | ECN     | DATE     | CHKD | APPVD | <u>TOLERANCES UNLESS SPECIFIED:</u><br>125 FINISH ALL OVER<br>REMOVE ALL BURRS<br>BREAK ALL CORNERS .015/.005<br>DECIMAL .XX +/- .015<br>.XXX +/- .005<br>ANGULAR +/- 1<br>CONCENTRICITY .007 TIR | <u>NOTICE:</u><br>THE DATA IN THIS DOCUMENT INCORPORATES<br>PROPRIETARY INFORMATION AND RIGHTS OF<br>SUPERIOR PRODUCTS, INC. CONFIDENCE AND<br>AGREES THAT IT SHALL NOT BE DUPLICATED IN<br>WHOLE OR IN PART, NOR DISCLOSED TO OTHERS<br>WITHOUT THE WRITTEN CONSENT OF SUPERIOR<br>PRODUCTS, INC. | INTERPRET GEOMETRIC<br>TOLERANCING PER: ANSI Y14.5 |  |   |
| A                                   | REDRAWN | 11/20/08 | GDG  | PSM   |   |  | <b>DO NOT SCALE</b>                                |  |   |
|                                     |         |          |      |       |   |  |  |  |   |



1.103-14 RH NGO  
CGA - V1  
CONN - 701  
TYP