

DWG. No./Part No.:

MN-050

CODE: DESCRIPTION:

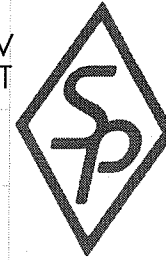
S INLET NUT, CGA-180

MATERIAL:

.7500 HEX BRASS

FINISH:

OEM DECORATIV
BRIGHT NiCr PLAT



**Superior
Products,
Inc.**

REV
A

ECN

DATE
11/04/05

CHKD
GDG

APPVD

TOLERANCES UNLESS SPECIFIED:

125 FINISH ALL OVER
REMOVE ALL BURRS
BREAK ALL CORNERS .015/.005
DECIMAL .XX +/- .015
.XXX +/- .005
ANGULAR +/- 1
CONCENTRICITY .007 TIR

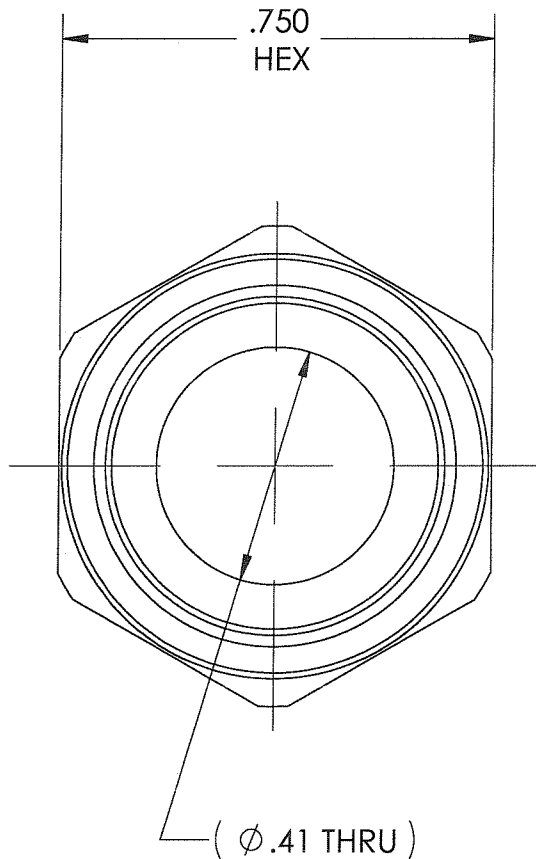
NOTICE:

THE DATA IN THIS DOCUMENT INCORPORATES
PROPRIETARY INFORMATION AND RIGHTS OF
SUPERIOR PRODUCTS, INC. CONFIDENCE AND
AGREES THAT IT SHALL NOT BE DUPLICATED IN
WHOLE OR IN PART, NOR DISCLOSED TO OTHERS
WITHOUT THE WRITTEN CONSENT OF SUPERIOR
PRODUCTS, INC.

INTERPRET GEOMETRIC
TOLERANCING PER: ANSI Y14.5

DO NOT SCALE

ORIGINAL



5/8-18 RH UNF
CGA - V-1
CONN - 180

